

Marathon City School District



Raider Reopening Plan

Our Goals

- The health of ALL students and staff is our top concern.
- ALL students should have the chance to be in school and have equitable access education.
- Our goal is to have ALL students in school **as much as possible for in-person learning.**

Safety: The Marathon City School District values the safety of our students, staff, and families. Plans to return to school have taken into consideration the variety of safety needs that will exist within our buildings and reflect input and guidance from the Marathon County Health Department, the Center for Disease Control (CDC), the Department of Public Instruction (DPI), and the American Academy of Pediatrics.

Social and Emotional Well-being: The overall emotional health and well-being of our students and staff will remain at the forefront of all planning efforts. In coordination with the district's Mental Health Team, an intentional focus will be placed on building a positive and supportive culture among students and staff.



Instruction: The Marathon City School District understands the importance of meeting our students where they are at and aims to provide instructional methods that will continue advancing the learning of our students. As individual barriers to learning are met, methods will be differentiated so as to address gaps in learning that may be present due to the previous quarter of distance learning.

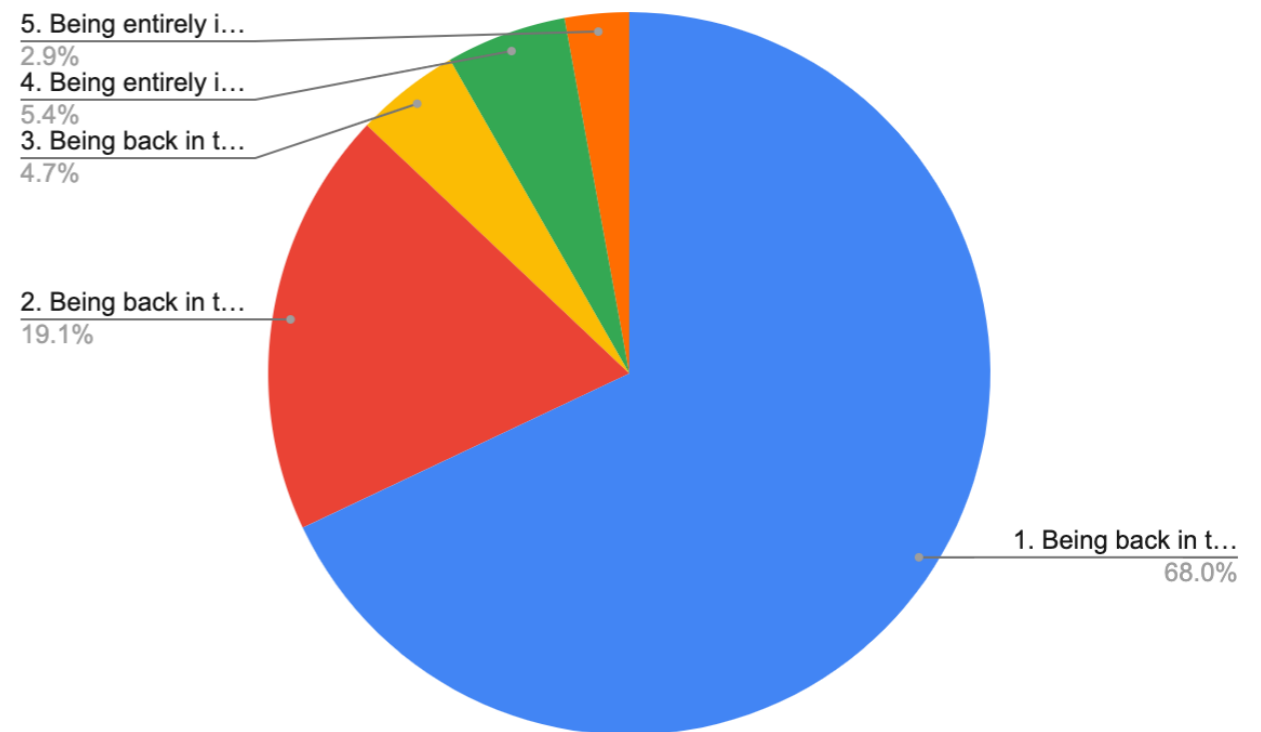
Flexibility: It is the ambition of The Marathon City School District to return to school for in-person learning on September 1. With that in mind, we understand the importance of flexibility in being able to shift our plans and methods of instruction should the need arise. The Marathon City School District is prepared for virtual learning, should this become necessary, and has an established framework in place to provide digital instruction via the use of Powerschool and a live streaming service.

Parent Survey

A survey was conducted of all District parents from the end of June to the middle of July. A total 278 surveys were returned and offered feedback on a variety of topics.

Responses were not definitive on most topics, including whether to return to school in person for the upcoming fall semester. Of the respondents, 68% percent felt safe returning to school for all in-person learning.

With this feedback, the District will be offering students a choice for their learning method for the upcoming school year.



- 68%** 1. Being back in the physical school setting as much as possible
- 19.1%** 2. Being back in the physical school setting for some amount of time with some learning delivered remotely
- 4.7%** 3. Being back in the physical school setting for a very limited amount of time, with the majority of instruction delivered remotely
- 5.4%** 4. Being entirely in a virtual school environment, at least for the first semester of the school year
- 2.9%** 5. Being entirely in a virtual school environment, at least for the 2020-2021 school year

Plan To Reopen Schools Safely- Two Options

IN PERSON SCHOOL - Phase 1 (grades 4K-12)

Four days a week with a prescribed school schedule and health protocols in place. Health protocols include wearing masks; maintaining student cohort groups that remain together throughout the day as much as possible; hand washing/sanitizing on a regular, consistent basis; surface/object sanitizing; daily symptom screening and temperature taking at home; and physical distancing whenever possible.

IN PERSON SCHOOL - Phase 2 (grades 4K-12)

After getting school started safely, the “In Person School” plan will be evaluated and if conditions support, it may transition to 5 days a week.

DISTANCE "REAL TIME" LEARNING (grades 5k-12 only)

Five days a week, students will attend classes from home along with students who are attending in person. Students will connect to the class, ask questions, and experience class instruction and activities in “real time” for core (math, science, social studies, and English language arts) area classes. Some classes may not be available in this model. **Expectations, including attendance and rigor of assignments, will be the same as students attending in person.**

In Person

Distance "Real Time" Learning

Where does the learning occur?

At School-Monday, Tuesday, Thursday, Friday.
Students will work from home on Wednesday.

At Home - Monday, Tuesday, Thursday, Friday.

When does the student attend?

During the normal school day

During the normal school day

What does instruction look like?

Classroom instruction is delivered in person with a blend of direct instruction, individual student work, and/or small group instruction in a traditional, student-centered format

Classroom instruction is delivered in person with a blend of direct instruction, individual student work, and/or small group instruction in a traditional, student-centered format. In this case, the student is "attending" class from home connected to their class via live stream in real time while their classmates are attending live in the classroom.

To whom is this available?

Available for all grade levels

Available for grades 4k-12. Courses available will be limited to core classes (math, English, science, social studies) and a limited number of elective/encore courses in grades 6-12.

What safety protocols will be in place?

All students and staff will wear masks. Regular cleaning and sanitizing protocols will be implemented. Students will remain socially distanced to the extent possible. Families will conduct daily health screens before sending their students to school and are asked to keep sick students at home.

All learning takes place at home.

Plan To Reopen Schools Safely- Adjustments and Flexibility

During the school year, COVID-19 cases increasing within the student body, staff, or within the county may require the district to increase physical distancing measures. When this occurs the district will make a decision with input from the school board, administration, and Marathon County Health Department. If this occurs students would begin attending school either on a **Split Group Format**, attending school two days per week, or an **All-Students Virtual Format**.

Split Group Example Schedule

Group 1 Students: Students attend school Monday and Tuesday. Thursday, Wednesday and Friday they attend classes real-time virtually and continue learning.

Group 2 Students: Students attend school Thursday and Friday. Monday, Tuesday, and Wednesday they attend classes real-time virtually and continue learning.

All Students Virtual

Five days a week, students will attend classes from home. Students will connect to the class, ask questions, and experience class instruction and activities in “real time” for core (math, science, social studies, and English language arts) area classes as much as possible (we understand that internet connectivity will be an issue for some and classes will be recorded and posted as well). Some classes may not be available in this model. **Expectations, including attendance and rigor of assignments, will be the same as if students were attending in person. 4K students may also have an adjusted schedule.**

Option 1: In Person School

Assuming that there is not a spike in the COVID-19 numbers we will open school on September 1 and in person with the following guidelines:

School Attendance:

- Parents/guardians will monitor their student's health. If students have COVID-related symptoms, they should stay home.
- Students will attend school on Monday, Tuesday, Thursday, and Friday.
- If they have symptoms that are related to an ongoing condition, e.g. allergies, they should come to school.
- Student temperatures are encouraged to be taken at home to ensure students are not attending school with a temperature of 100.00 or higher. Students with a high temperature should stay at home until they are 24 hours fever free without medication. At school, student temperatures may be taken in random screenings.
- Similar to our past approach, parents/guardians will be called to pick up students who develop symptoms at school.
- Attendance will be taken as it has in the past.
- If a student has repeated issues with mask wearing they may be required to switch to Distance "Real Time" Learning.



Option 2: Distance “Real Time” Learning

- The distance learning option will be provided for students in grades 5k-12 only.
- 4k will have an adjusted schedule.
- In this option, students will log into the classroom where other students are attending class in person.
- Attendance will be monitored and should a student not be in attendance repeatedly, the District may require the in-person option.
- Students engaging in a distance learning option may be grouped with students from different grade levels.
- The student will be provided their schedule to minimally include specific English/language arts, math, science, and social studies. In this option, advanced level courses may be available. Some elective options may not be afforded to students participating in distance learning.
- If a student is not performing at grade level, the student may have additional contact with their teacher in a virtual face-to-face format.
- It is the responsibility of the student to be on time, follow the daily schedule, and perform all of the teacher-assigned tasks and activities while in the distance learning environment.
- Similar to in-person delivery, there will be high expectations for all students selecting this option. Grading will not be different than students attending in person.
- Grades will count toward the student’s GPA. Credits needed for graduation will remain the same.



Split Group and Virtual Learning

- The Split Group Option and the Virtual Option will be implemented should the school district need to close or increase physical distancing. This will mean students attend school two days a week or all students will be virtual. The virtual experience will be similar to what took place at the end of the last school year. In this option, all activities are online with interaction between students and the teacher as prescribed.
- Attendance will be monitored.
- Students engaging in a virtual option may be grouped with different teachers to help reduce the teacher to student ratio.
- At the secondary level, the student will be provided their schedule to minimally include English/ language arts, math, science, social studies, and physical education. Freshmen students will be required to take health. Select classes at the secondary level such as welding, band, or other elective options may not be afforded to students when school is in virtual.
- If the school finds it necessary, the student may require having additional contact with their teacher in a virtual face-to-face format above and beyond the instruction the entire class is receiving.
- It is the responsibility of the student to perform all teacher-assigned tasks and activities while in the virtual learning environment.
- Similar to in-person delivery, there will be high expectations for all students. Grading will not be different and at the secondary level, grades will count toward the student's GPA.
- At the secondary level, credits needed for graduation will remain the same.

Make A Selection by August 16

Parents will have a choice to send their children to school four days a week or to have Distance “Real Time” Learning, assuming that there is enough interest. In order to prepare for staffing and technology needs, please choose the learning option for each of your children by **AUGUST 16**. Children in the same family may choose different options.

[CLICK HERE](#) for a link to the survey.



Choices Offered On A Half School Year Basis

The choices will be offered on a half school year basis, ending Jan. 23. A parent choosing the Distance “Real Time” Learning option will be making a commitment until January 23, 2021.

Depending upon our status as well as enrollment, this option may or may not be offered the second semester. **For anyone not responding by August 16th, the District will assume in-person attendance on September 1.**

There will be times throughout the course of the year that we may need to make shifts and we will need to be flexible. As we enter the year, we will do so cautiously. The reason for this is that we must be safe and we want to keep our schools open. We will need the help and partnership of everyone in order to do this.



In Person Guidelines: Wearing Masks

All staff and visitors will be required to wear masks.

All students will be required to wear masks when physical distancing is not possible.

4k-4th grade: Masks will be required* on the bus, when arriving at school, in the halls, etc. 4k-4th grade students will be grouped in cohorts* and will try to physically distance as much as possible in the classroom so that they will not be required to wear a mask most of the time in the room. There may be times when a teacher needs to be close to the student and then the student will be asked to wear a mask.

5-12th grade: Masks will be required* on the bus, when arriving at school, in the halls, and most of the time in the classrooms. With class sizes and limited space, physical distancing will be difficult and placing students in cohorts is not possible. Due to this, mask wearing is required to ensure that we can offer in person school everyday for these grades.

We understand that it will be necessary to be patient as we begin this new requirement and especially at the elementary level. We also understand that wearing a mask for seven hours is not reasonable so “mask breaks” will be provided throughout the course of the day in various forms.

* *Cohort* - refers to grouping students together into a group that they will stay in for the full school day.

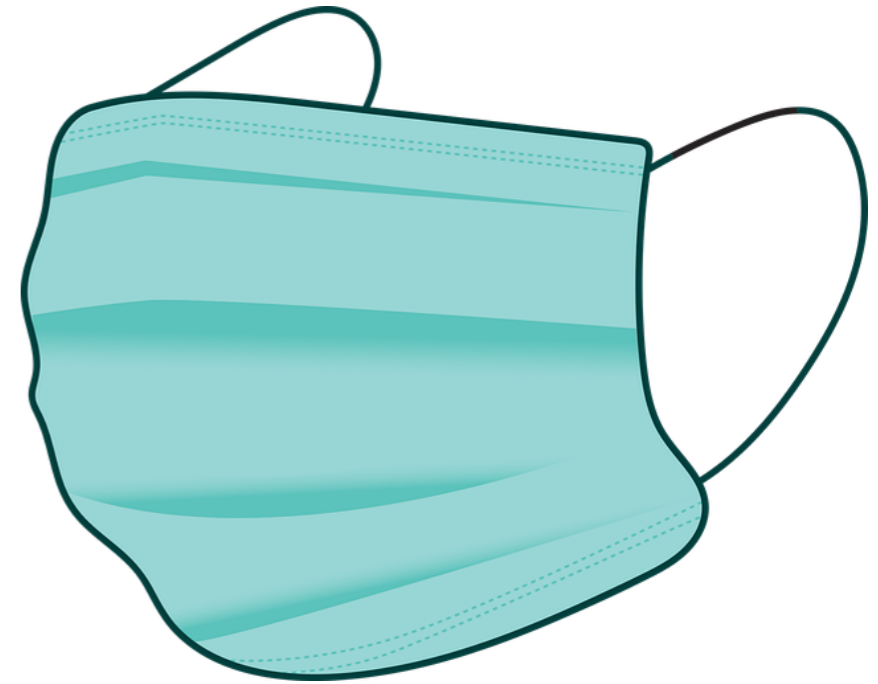
***We will follow State and County orders when in effect regarding masks. When orders end we may continue with district mask plans.**

In Person Guidelines: Why Wear A Mask?

For now, in addition to the physical distancing, this is the best way to minimize the transfer of COVID-19. In order for our schools to remain open, offering 4 day a week in person classes, we believe everyone must work together to minimize the transfer of COVID-19.

According to the American Academy of Pediatrics, wearing a mask can protect others if the wearer is infected with the virus and is not aware. Cloth masks may also offer some level of protection for the wearer. Evidence continues to mount on the importance of universal face coverings in interrupting the spread of the virus.

***We will follow State and County orders when in effect regarding masks. When orders end we may continue with district mask plans.**



In Person Guidelines: Why Wear A Mask?

This will be a transition for all of us. Wearing a mask is something that will be required at certain times throughout the day by all students. Your child's teacher will teach, model and remind all students about the expectations of wearing a mask while at school.

- All students are required to bring masks to school on a daily basis.
- If a student needs a new mask while at school, one will be provided.

We understand that this will be a new experience for all of us and we must be patient as adjustments are made. We also must be aware that there may be some students, for various reasons, who are unable to wear a mask and we will need to work through that. Students without medical or other identified needs will be required to wear masks at the times identified above and/or by the teacher or administrator.

*** We will follow State and County orders when in effect regarding masks. When orders end we may continue with district mask plans.**



In Person Guidelines: Mask Requirements

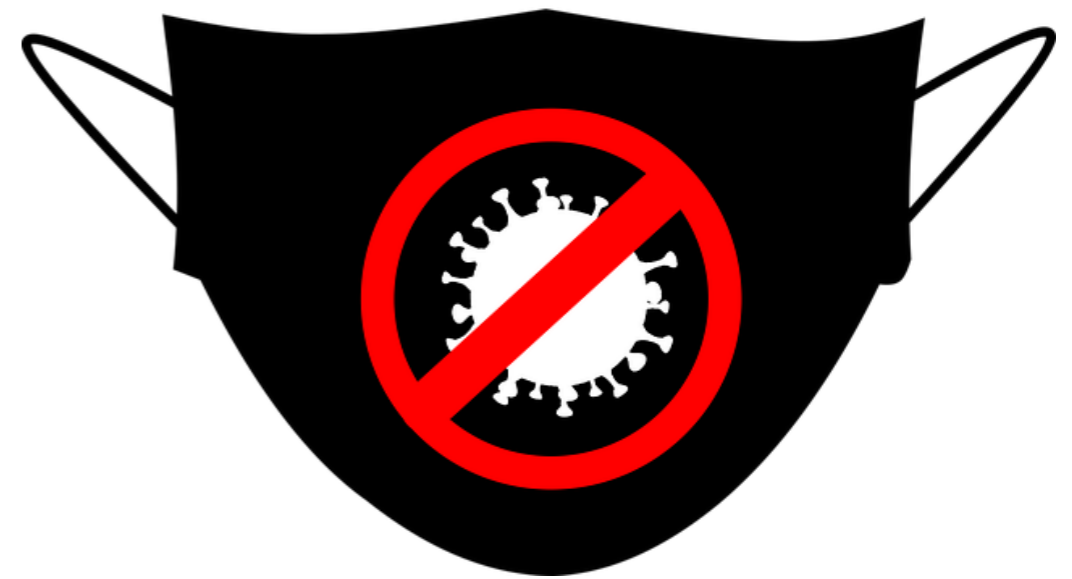
WHEN DO I NEED TO WEAR A MASK?

- When I am within 6 feet of someone
- When I am talking to other students or an adult
- When I am in a classroom working in a small group
- When I am in the hallways, bathrooms, or other common areas

WHEN DO I HAVE A CHOICE TO WEAR A MASK?

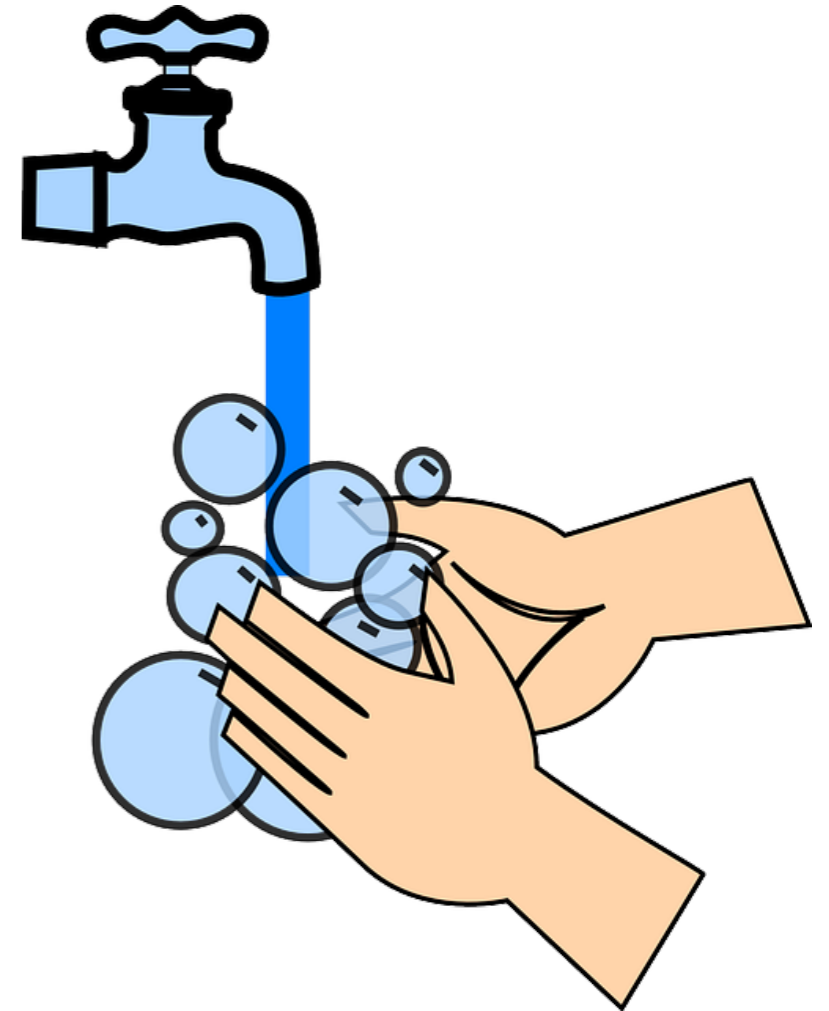
- When I am in my cohort grouping in my classroom (4k-4th grade)
- When I am outside and more than 6 feet away from someone
- When I am inside of a classroom, more than 6 feet apart and working by myself

*** We will follow State and County orders when in effect regarding masks. When orders end we may continue with district mask plans.**



In Person Guidelines: Classroom Expectations

- All students will follow the daily hygiene procedure when entering the classroom, including washing their hands or using hand sanitizer regularly and consistently throughout the day.
- Students may be asked to assist in cleaning their desktops and other areas they have used.
- Students will be placed in the same small groups as much as possible.
- When students are spaced 6 feet apart and listening to the teacher or working silently by themselves, they do not need to wear masks. When students are working in close proximity, masks are to be worn.
- When students are in their cohort groups, 4k-4th grade, they will not be required to wear a mask, but are encouraged to if they wish. In grades 5-12 students will be required to wear masks.
- Safety plans have been developed along with local health officials and the [American Academy of Pediatrics](#). (*Link*)



We will follow State and County orders when in effect regarding masks. When orders end we may continue with district mask plans.

In Person Guidelines: Recess Expectations

- Physical distancing is to take place as much as possible.
- Masks are not required when outside AND social distancing takes place.
- Students outside will be kept in cohorts 4k-8th grade.
- When using equipment, students may be placed in cohort groups in order to minimize contact with other students.
- Students may choose to wear a mask at all times
- Playground equipment will be cleaned routinely.
- Students will wash/sanitize hands before and after recess.

We will follow State and County orders when in effect regarding masks. When orders end we may continue with district mask plans.



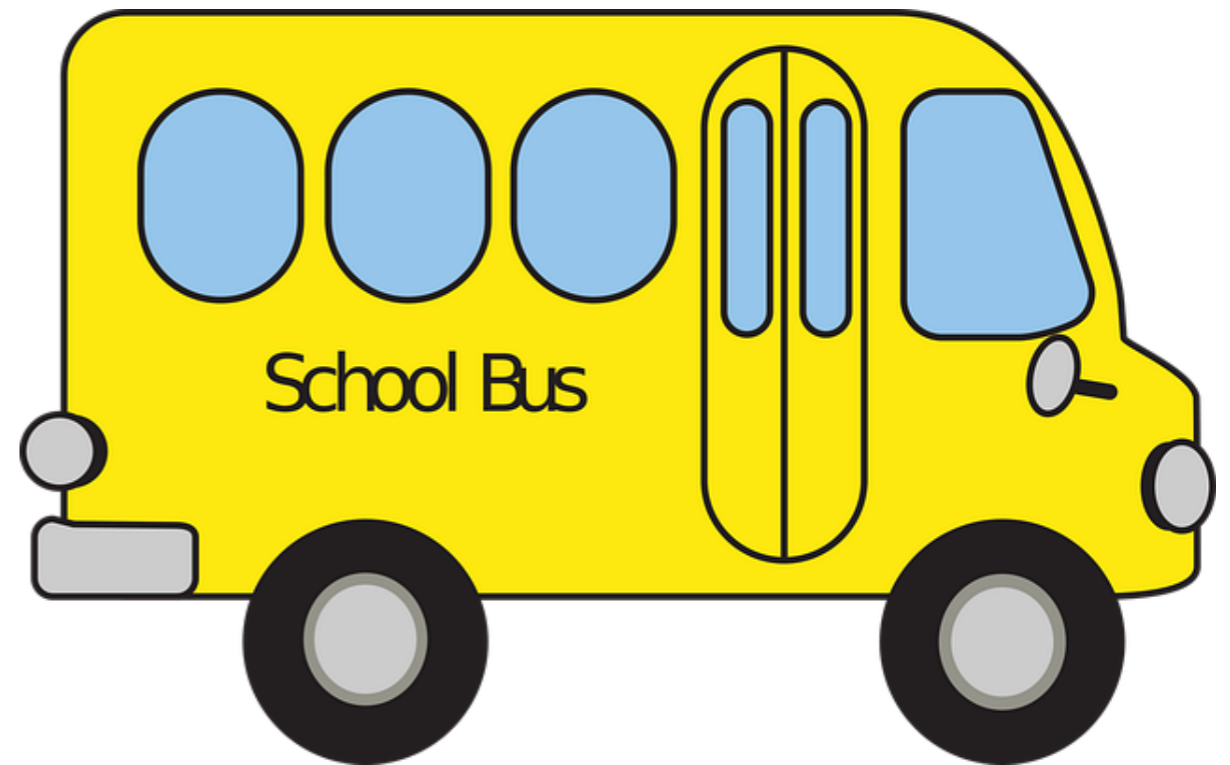
In Person Guidelines: Lunch

- We will make every attempt to have students physically distanced while eating.
- Students may eat in their classroom or in other identified spaces as determined by the teacher/administrator.



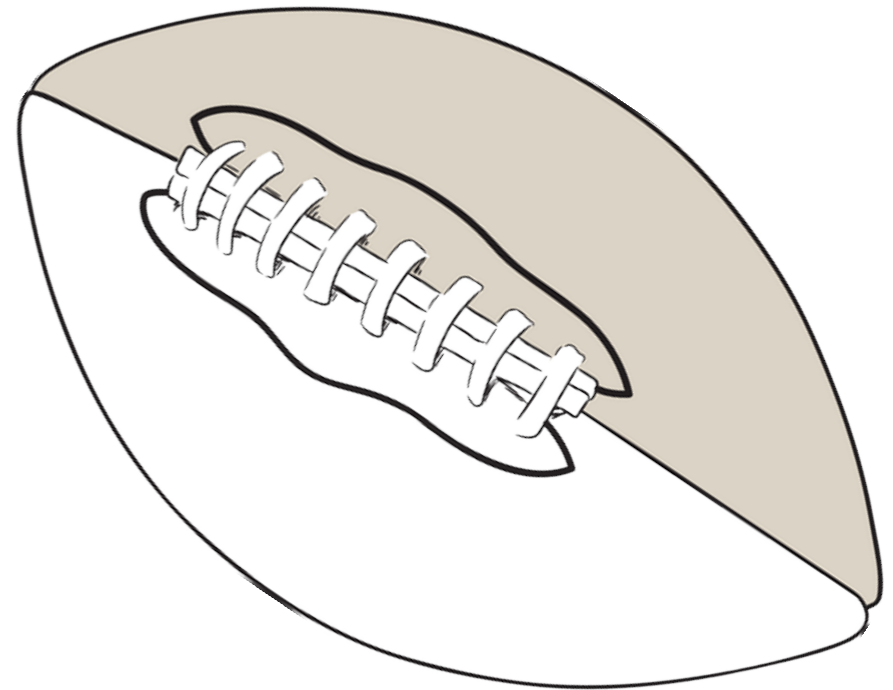
In Person Guidelines: Busses

- All students riding a school bus must wear a mask.
- All students will be given assigned seats due to requirements for contact tracing related to COVID-19.
- Students will sit one student per seat.
- Students with siblings may be assigned to sit together.
- Spacing will take place as much as possible.
- Bus seats and other high touch areas will be sprayed with disinfectant between each route and the entire bus will be deep cleaned each night.



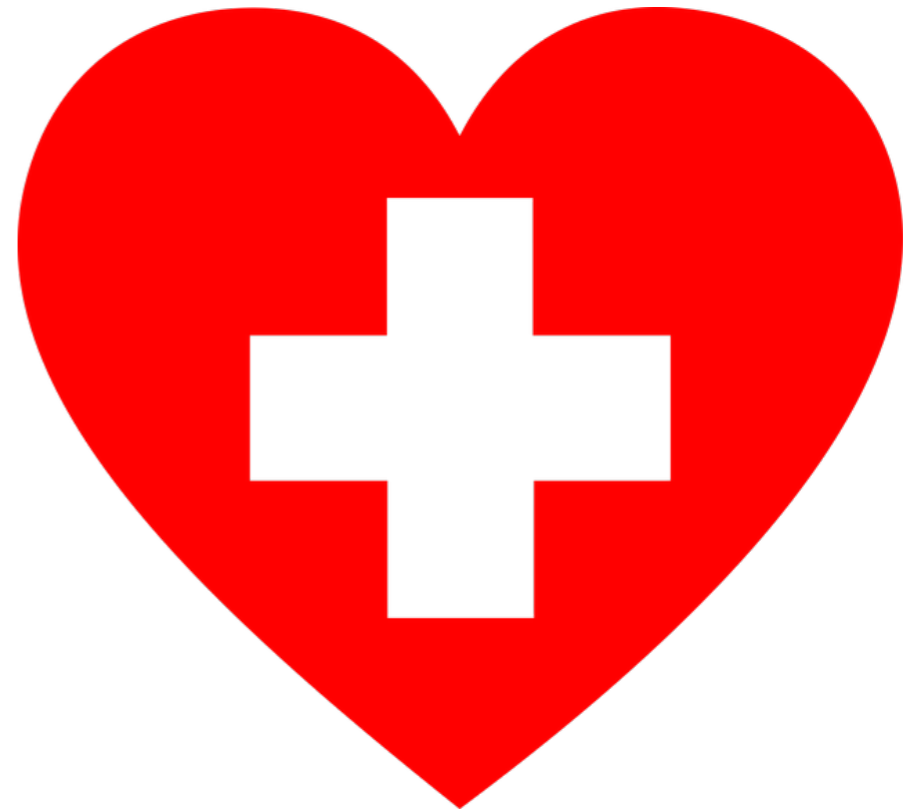
Additional Guidelines: Athletics and Activities

- Athletics and activities will be available to students in both learning options.
- If school changes to virtual-only for all students at any point of the year, athletics and activities will be suspended.
- The status of athletics will be monitored along with WIAA and Marawood Conference.
- More information about athletics and activities will be provided as it becomes available.



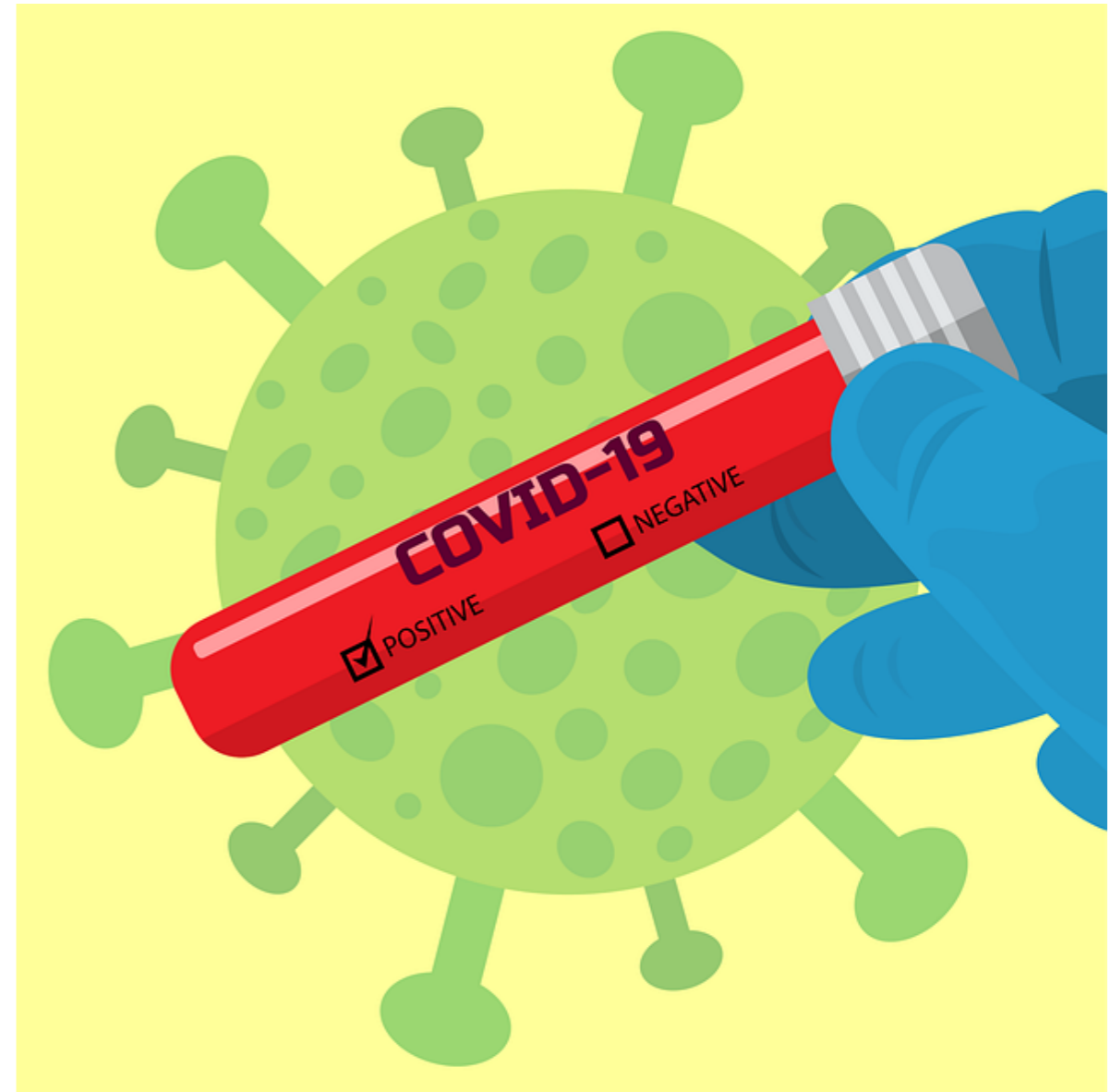
Health Procedures: Suspected COVID-19 Case

- An isolation room is identified in each school for a COVID-19 suspected case and the student will be monitored by a school nurse or assistant until the parent or guardian arrives.
- The nurse or assistant will provide instructions to the parent or guardian as well as information to include testing for COVID-19.
- More information will be provided closer to the school year.



Health Procedures: Verified COVID-19 CASE

- If a student or staff member tests positive for COVID-19, the Marathon County Health Department will conduct a contact tracing investigation for all students and staff who were in close contact (less than 6 feet for more than 15 minutes).
- Students who test positive for COVID-19 or are exposed and have been instructed by the Marathon County Health Department to quarantine or self-isolate, will be required to transition to Distance “Real Time” Learning until they are cleared to return to school.
- All students and staff in this situation may be isolated or quarantined as directed by the Marathon County Health Department.
- Whenever possible, isolated or quarantined students will participate in a Distance “Real Time” Learning if they are well enough.
- More information will be provided closer to the school year.



Elementary Daily Schedule

Name Of Course	Delivered By	Location of Instruction
Core courses (literacy, math, science, social studies)	Regular Classroom Teacher	Regular Classroom-in cohort
Art	Art Teacher	Regular Classroom-in cohort
Music	Music Teacher	Regular Classroom-in cohort
Physical Education	Physical Education Teacher	Outside whenever possible, regular classroom during inclement weather-in cohort
Library	Librarian	Regular Classroom-in cohort

6-8 MVA Daily Schedule

Name Of Course	Delivered By	Location of Instruction
Math	Math Teacher	Math Teacher Travels from room to room.
Science	Science Teacher	Science Teacher Travels from room to room.
Social Studies	Social Studies Teacher	Social Studies Teacher Travels from room to room.
Language Art-Reading and Writing	Language Art Teachers	Language Art Teacher Travels from room to room.
Electives: PE, Art, Spanish, Music, etc..	Elective Teacher	Elective Teacher Travels from room to room or outside when possible.

9-12 MHS Daily Schedule

Name Of Course	Delivered By	Location of Instruction
AM Course: Two, 111 minute extended periods; each course meets two consecutive days,	Course Teacher	Course Teacher's Classroom
Lunch and RE Split-two 20 minute sections	Lunch in physically distanced large space, or classroom.	Lunch in physically distanced large space, or classroom.
PM Courses: One 111 minute extended period; One 48 minute, skinny course meets, two consecutive days.	Course Teacher	Course Teacher's Classroom

When students arrive at school they will go to their lockers, then report immediately to their 1st hour class. Students will repeat the same schedule for two days in a row (Mon.- Tue., and Thurs.- Friday) with Wednesday being at home learning. This will assist with grouping students to limit contacts and exposure.

Get More Information

Contact us with questions:

Email: reentry@marathonschools.us

Phone: 715-443-2226 x-4107